

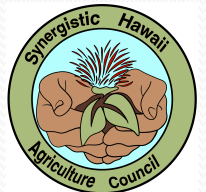
Synergistic Hawaii Ag Council



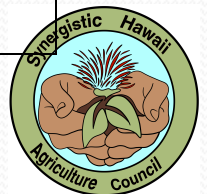
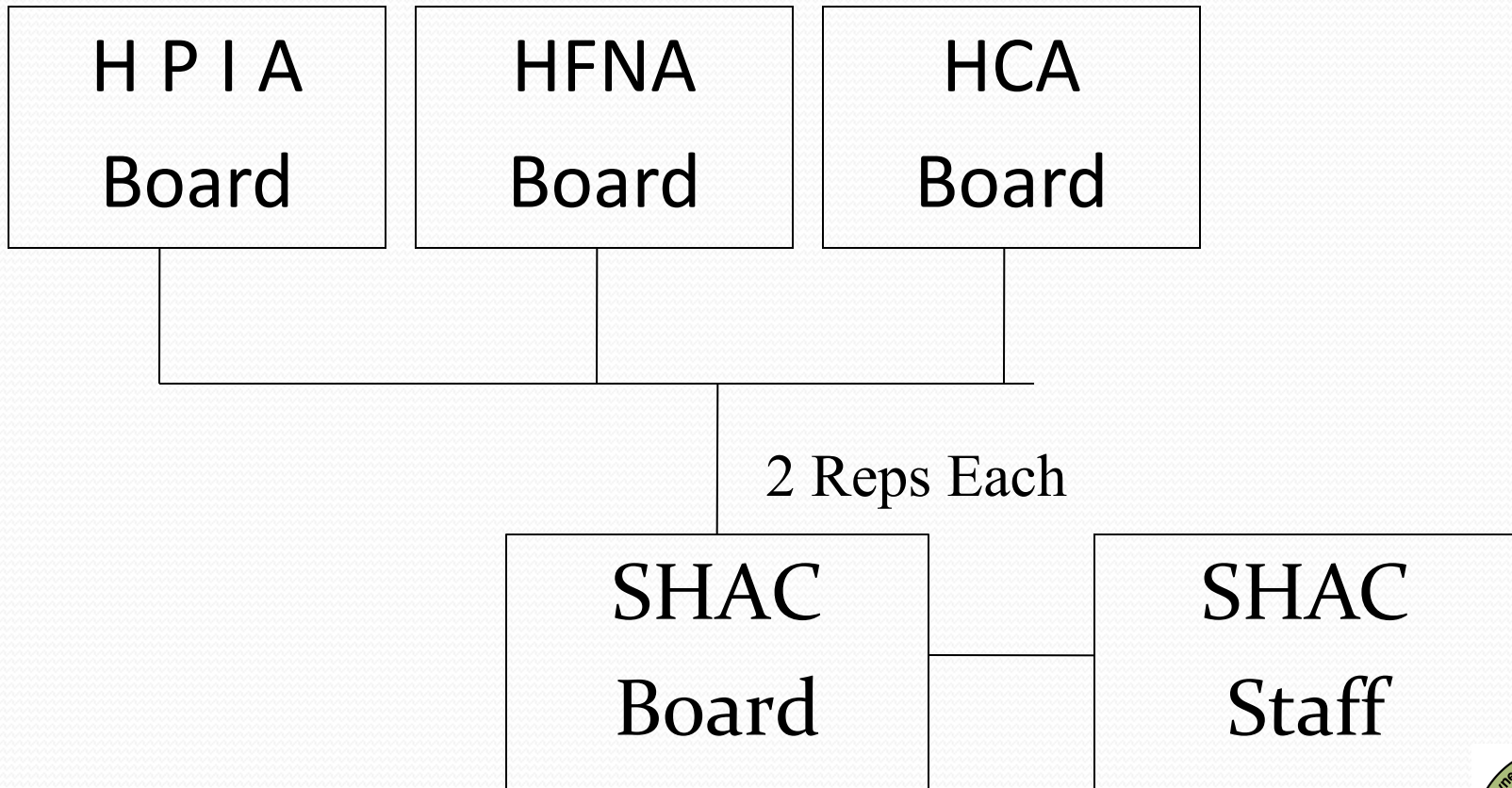
A consortium of
Hawaii Coffee Association
Hawaii Papaya Industry Association
Hawaii Floriculture & Nursery Association

VISION

Our mission is to unite our members' resources and support the growth of Hawaii agriculture. We also seek to remove economic barriers, expand markets and promote trade for our producers

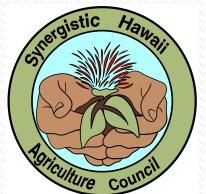


Membership Structure



USDA Foreign Ag Service Programs

- **MAP - Market Access Program**
 - Funding for overseas marketing and promotional activities that help build commercial export markets for U.S. agricultural products
 - Proposal due each June (this Friday!)
- **TASC - Technical Assistance for Specialty Crops**
 - Solutions for industry's "barrier to export"



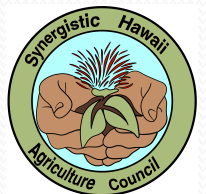
Regulatory and Trade

- Access to Ag Trade Offices (ATO) in Embassies
- Pyrethrin PBO issue in Japan
 - Maximum Residue Level for PBO elevated to bilateral trade talks through USTR
- Import permits for Hawaii Papaya into China
- Utilize relationships with Congressional staff to resolve trade issues
- Work with USDA to classify coffee as a “food product” eligible for government purchase




2020 Market Access Funding


- \$83,000 from USDA to target China/Taiwan buyers
 - SCA show: Show and Booth costs, travel, etc
 - Taiwan Trade Show
 - Reverse Trade Mission bringing buyers to us
 - Generic Marketing Program: development of buyer list, brochures, targeted media
 - “Branded Programs” through WUSATA
- \$8,300 from HCA required as industry co-pay



Economic Data



United States Department of Agriculture
Foreign Agricultural Service



Global Agricultural Trade System Online

[Publish](#)
[GATS Home](#)
[Reports](#)
[Analytics](#)
[Reference Info](#)
[Help](#)
[Contact Us](#)
[User Settings](#)

You are here: FAS Home / Searchable Databases / Analytics / Data Analytics / Standard Query

Standard Query

Data Source
U.S. States

Product Type
Exports

Product Groups
BICO (HS-6)-*

Reporters
United States
All Regions
All States

Northeast

Connecticut
Massachusetts
Maine
New Hampshire
New Jersey
New York
Pennsylvania
Rhode Island
Vermont

Midwest

Iowa
Illinois
Indiana
Kansas
Michigan
Minnesota
Missouri

Partners
World Total
All Regions
All Partner Groups
All Partners

Regions

Caribbean
Central America
East Asia
EU27+UK
Former Soviet Union-12
Middle East
Miscellaneous Designated Areas
North Africa
North America
Oceania
Other Europe
South America
South Asia
Southeast Asia
Sub-Saharan Africa

Partner Groups

Products

Bulk Agricultural Total-*

Coffee, Unroasted-*
090111 - Coffee Not Roasted
090112 - Coffee, Notroset Def

Intermediate Agricultural Total-*

Other Intermediate Products-*
090130 - Coffee Husks And Skins

Consumer Oriented Agricultural Total-*

Coffee, Roasted and Extracts-*
090121 - Coffee, Roasted
090122 - Coffee, Roasted, Def
090140 - Coffee, Substitutes
090190 - Coffee Husks

Commodity Search
Code 0901 [Go](#) [Clear](#)
Statistics
Value: Value Dollars
Dates
Series: Annual
Monthly Range: Jan - Dec
Year Range: 2015 - 2020
End Month: Apr
Settings
Precedence: US State/Partner/Product
Include: All
Order By: Rank
In Detail: Summary
Calculation: Period/Period % Change
[Retrieve Data](#)

[Chart Options](#)

Data

[Printer Friendly](#)
[Other Formats](#)
[Create CSV File](#)
[Calculation Formulas](#)
[Change Base Year](#)
2019

Area/Partners of Destination
And Commodities Exported

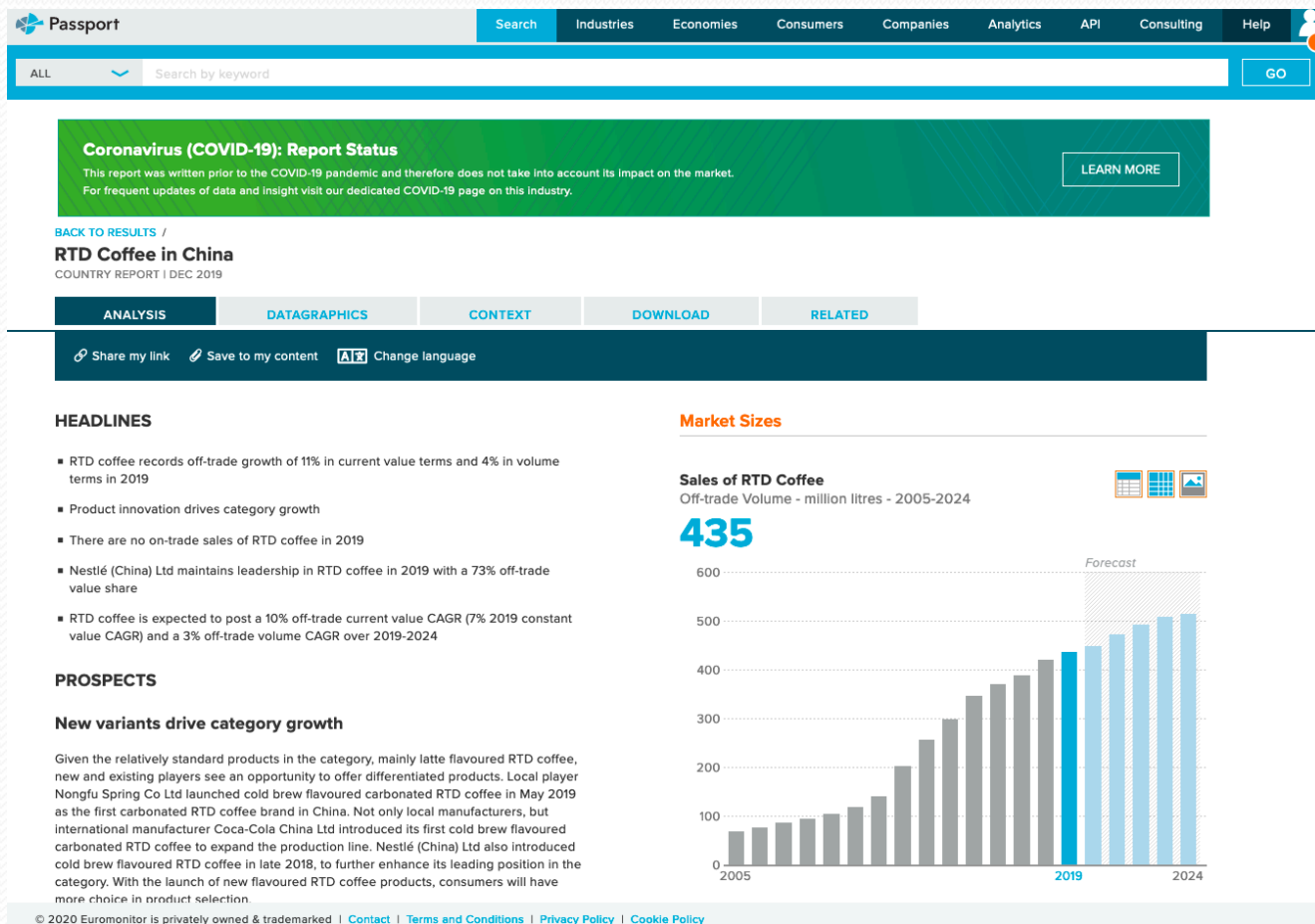
January - December
Cumulative To Date Values in dollars

			2015	2016	2017	2018	2019	Jan - Apr 2019	Jan - Apr 2020	Period/Period % Change (Value)	
U.S. State	Partner	Product	Value	Value	Value	Value	Value	Value	Value		
<input type="checkbox"/> 1	Hawaii	1+ World Total 1	090121 - Coffee, Roasted	5,769,820	5,893,516	6,860,317	5,175,931	5,218,336	2,414,498	1,422,091	-41
<input type="checkbox"/> 1	Hawaii	1+ World Total 2	090111 - Coffee Not Roasted	7,128,659	4,024,217	4,493,463	5,927,675	3,853,185	389,370	3,694,703	849
<input type="checkbox"/> 1	Hawaii	1+ World Total 3	090122 - Coffee, Roasted, Def	114,044	15,582	50,616	3,161	46,149	6,149	2,900	-53
<input type="checkbox"/> 1	Hawaii	1+ World Total 4	090112 - Coffee, Notroset Def	28,453	20,500	6,400	35,300	20,000	20,000	8,800	-56
	Grand Total			13,040,976	9,953,815	11,410,796	11,142,067	9,137,670	2,830,017	5,128,494	81

Notes:
1. Data Source: U.S. Census Bureau Trade Data, U.S. State Export Data
2. Product Group: BICO-HS6
3. [Click here for the limitations of the United States State Export Data](#)



Economic Data



USDA PBARC Grant

Under the ARS Areawide Program

Three-year Contract with Luis Aristizábal to do Frequent Harvesting Research

- Investigate the use of frequent and effective harvesting for coffee berry borer control on coffee farms in Hawaii.
 - 4 Kona Farms
 - 4 Ka'u Farms
- Analyze the cost-benefit of various practices considering economic cost as well as crop quality.
- Develop extension recommendations for growers and field workers



Mahalo



Suzanne@ SHACHawaii.org

